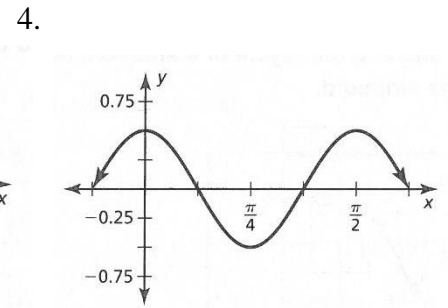
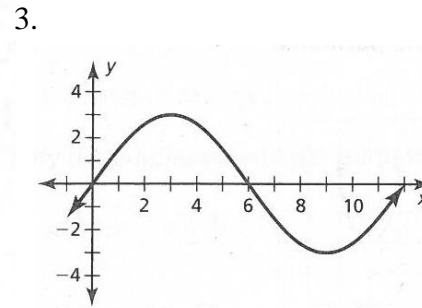
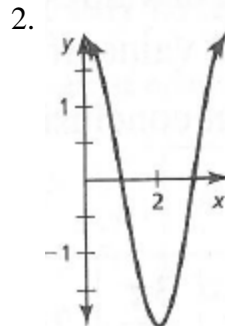
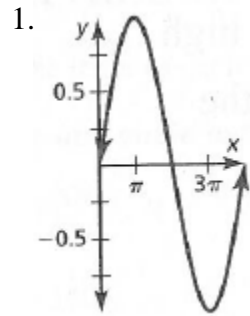


Algebra II
Trigonometry 6

Name _____

Identify the amplitude and period of the following graphs.



Identify the amplitude and period of the function.

5. $g(x) = 2 \sin x$

6. $f(x) = 4 \cos x$

7. $g(x) = -\sin 2x$

8. $f(x) = -3 \cos \pi x$

For each of the following fill in the table and graph.

Period:	Increment:	Pattern:
SA:	Max:	Min:

9. $y = \sin x - 3$

10. $f(x) = 2 \sin x + 1$

11. $y = \cos x + 2$

12. $g(x) = -2 \cos x - 1$

13. $y = -3 \sin 2x + 2$

14. $f(x) = 2 \cos \frac{1}{3}x + 1$

15. The water depth d (in feet) for the Bay of Fundy can be modeled by $d = 35 - 28 \cos \frac{\pi}{6.2}t$,

where t is the time in hours and $t = 0$ represents midnight. Use a graphing calculator to graph the function. At what time(s) in the water depth 7 feet?